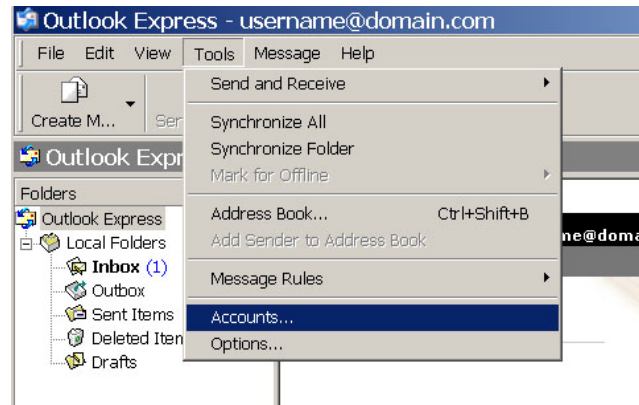
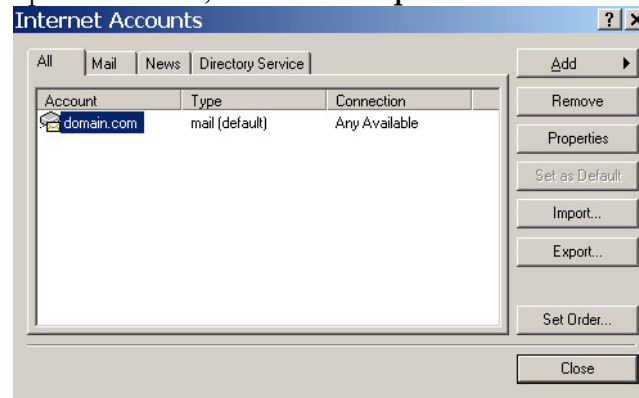


Change SSL Settings in Outlook Express

1. Click **Accounts** under the **Tools** menu.



2. Select the appropriate account, then click **Properties**.



3. Click the **Advanced** tab. Under the Outgoing Mail and Incoming Mail port numbers, make sure that the box next to “This server requires a secure connection (SSL)” is **unchecked**.

